



Unit 6D

Weavers Business Park, Belfast, BT12 5GH

Modern Office Accommodation

2,082 sq ft
(193.42 sq m)

- Generous on-site car parking
- Ready for immediate occupation

Unit 6D, Weavers Business Park, Belfast, BT12 5GH

Summary

Available Size	2,082 sq ft
Rent	Rent on application
Rates Payable	£16,228.73 per annum
Rateable Value	£25,900
Service Charge	£4.20 per sq ft
VAT	Applicable
Legal Fees	Each party to bear their own costs
EPC Rating	C (65)

Location

Weavers Court is strategically located next door to the new Weavers Cross Transport Hub, just 8 minutes walk to City Hall and less than 5 minutes drive to the motorway network.

Weavers Court is already hugely popular with technology firms due to its connectivity - every unit has direct access to a non-contested 10GB Fibre Optic Cable.

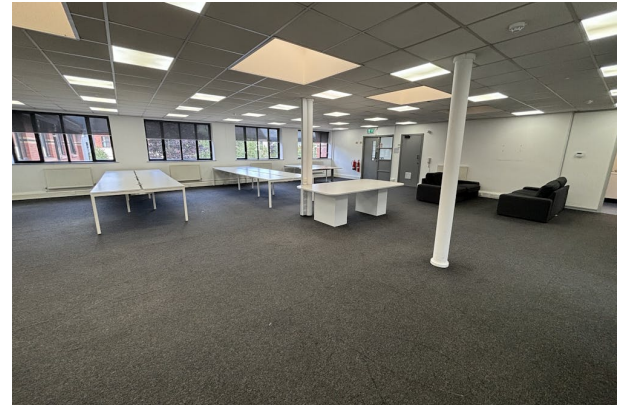
Facilities within this unique campus style development include courtyard café; gym; CCTV; bicycle stands and plenty of green open space.

Description

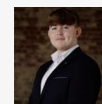
The property forms part of a purpose built edge of City Centre business park. The subject comprises c. 2,082 sq ft of first floor, modern office accommodation. Ample free staff and visitor parking is available on a first come first served basis.

This first floor unit is primarily open plan with 3.no private offices / meeting rooms, kitchenette and W.C facilities.

The subject offers bright & airy accommodation and is well fitted to include suspended ceilings with LED lighting, roof lights, part plaster painted walls, perimeter trunking and carpet floor covering.



Viewing & Further Information



Ross Molloy

07443 085690

ross.molloy@mcconnellproperty.com



Greg Henry

07841 928670

greg.henry@mcconnellproperty.com